

---

# Science GCSE and SPH

Course available:

Combined Science – 2 x GCSEs

Triple Science – 3 x GCSEs

---

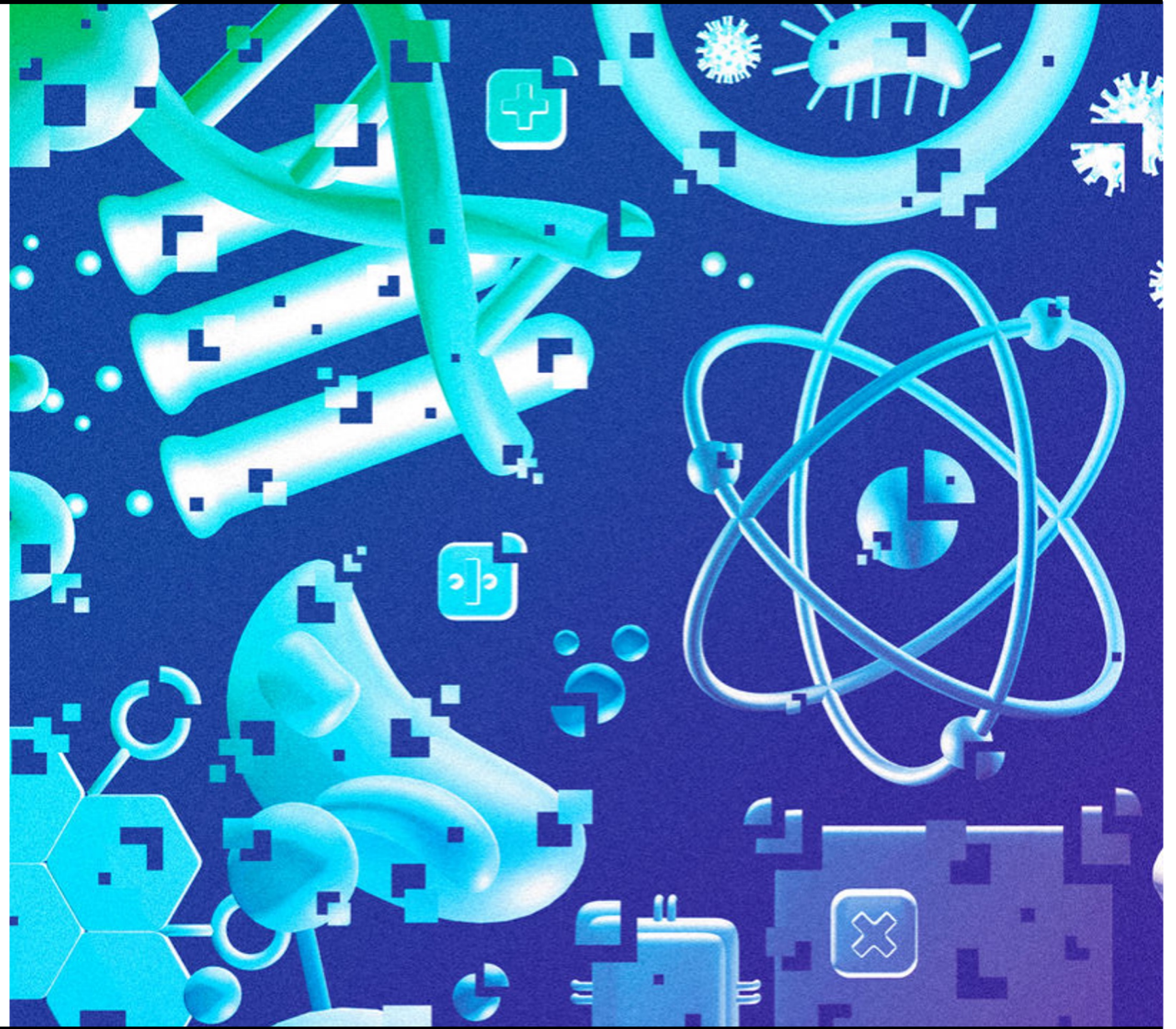


---

# Combined vs Triple

Triple is selected

- End of KS3 assessment
- Teacher judgment



---

# Combined Science – 11 lessons

Biology	Chemistry	Physics
B1 – Cell Biology	C1 – Atomic structure and p.table	P1 – Energy
B2 – Organisation	C2 – Bonding, structure and Properties of Matter	P2 – Electricity
B3 – Infection and response	C3 – Quantitative chemistry	P3 – Particle model of matter
B4 – Bioenergetics	C4 – Chemical changes	P4 – Atomic structure
B5 – Homeostasis and response	C5 – Energy changes	P5 – Forces
B6 – Inheritance, variation and Evolution	C6 – Rate and extent of chemical reactions	P6 - Waves
B7 - Ecology	C7 - Organic chemistry	P7 – Magnetism and electromagnetism
	C8 – Chemical analysis	
	C9 – Chemistry and the atmosphere	
	C10 – Using resources	

---

---

# Triple Science – 12 lessons

Biology	Chemistry	Physics
B1 – Cell Biology	C1 – Atomic structure and p.table	P1 – Energy
B2 – Organisation	C2 – Bonding, structure and Properties of Matter	P2 – Electricity
B3 – Infection and response	C3 – Quantitative chemistry	P3 – Particle model of matter
B4 – Bioenergetics	C4 – Chemical changes	P4 – Atomic structure
B5 – Homeostasis and response	C5 – Energy changes	P5 – Forces
B6 – Inheritance, variation and Evolution	C6 – Rate and extent of chemical reactions	P6 - Waves
B7 - Ecology	C7 - Organic chemistry	P7 – Magnetism and electromagnetism
	C8 – Chemical analysis	<b>P8 - Space</b>
	C9 – Chemistry and the atomosphere	
	C10 – Using resources	

---

# Fortnightly assessments

Every 2 weeks

- Biology
- Chemistry
- Physics
  
- Teacher assessed



---

# Required practicals

21 practicals in  
Combined Science

28 practical in Triple  
Science



# Final assessment Combined

Component	Maximum raw mark	Scaling factor	Maximum scaled mark
Biology Paper 1	70	x1	70
Biology Paper 2	70	x1	70
Chemistry Paper 1	70	x1	70
Chemistry Paper 2	70	x1	70
Physics Paper 1	70	x1	70
Physics Paper 2	70	x1	70
Total scaled mark:			420

BIOLOGY, CHEMISTRY, PHYSICS	COMBINED SCIENCE
9	9-9
8	9-8 8-8
7	8-7 7-7
6	7-6 6-6
5	6-5 5-5
4	5-4 4-4
3	4-3 3-3
2	3-2 2-2
1	2-1 1-1
U	U

# Final assessment

## Triple

Component	Maximum raw mark	Scaling factor	Maximum scaled mark
Paper 1	100	x1	100
Paper 2	100	x1	100
Total scaled mark:			200

BIOLOGY, CHEMISTRY, PHYSICS	COMBINED SCIENCE
9	9-9
8	9-8 8-8
7	8-7 7-7
6	7-6 6-6
5	6-5 5-5
4	5-4 4-4
3	4-3 3-3
2	3-2 2-2
1	2-1 1-1
U	U



# Revision



## REVISE



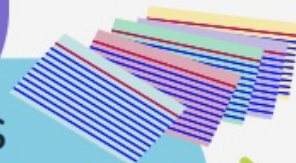
### Resources

- Revision guides
- Seneca
- Cognito
- Quizlet
- BBC Bitesize



### Strategies

- Flash cards
- Mind Maps
- Self Quizzing
- Brain Dump
- Frayer Model



### Assess

More than 80% correct  
START NEW TOPIC



80%



Less than 80% correct  
REPEAT TOPIC



## SCIENCE



### Apply

- Physics and Maths Tutor
- Save My Exams
- Maths Made Easy
- Work Books



## GCSE AQA SCIENCE



---

# Data - 2023

Course	9-4	9-5	9-7
Combined Science	77%	55%	16%
Biology	94%	86%	50%
Chemistry	96%	86%	64%
Physics	96%	89%	61%

---

---

# Next steps

A-Levels:

- Biology
- Chemistry
- Physics

Btec

- Applied Science

