

# Geography GCSE @SPH

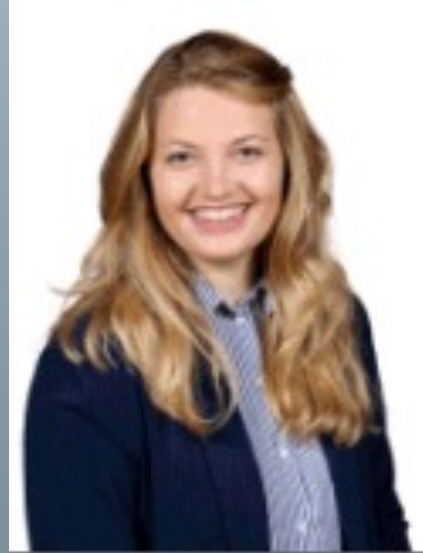


*'Becoming the people God calls us to be'*



**St Philip Howard**  
SIXTH FORM

# Meeting the Team



Miss Aldridge

Head of Department

BSc Physical Geography from  
Aberystwyth University

Went to SPH as a student from  
2005-2012



**St Philip Howard**  
SIXTH FORM



# Meeting the Team

Mrs Lewis

Geography Teacher

BA in Geography &  
Archaeology at the University  
of Manchester

Worked in aviation for 23  
years before becoming a  
teacher



**St Philip Howard**  
SIXTH FORM

# Meeting the Team



Miss Helyer

Geography Teacher &  
Assistant Head of Year 10

BSc Physical Geography at  
Aberystwyth University  
MSc Geophysical Hazards at  
UCL



**St Philip Howard**  
SIXTH FORM

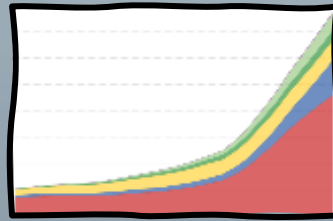


# Geographical issues in the 21<sup>st</sup> Century

'new'  
Emerging  
markets



Global  
population  
growth



Climate  
change



Global  
poverty



Urban  
regeneration  
'Levelling up'



Globalisation



Migration



Squatter  
settlements



Deforestation  
and  
biodiversity



Energy  
prices and  
security



Food and  
water  
availability



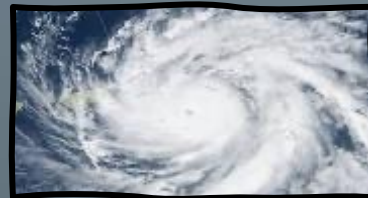
Coastal  
erosion/sea  
level rise



Effective  
aid



Extreme  
weather



Inequality  
within UK



River  
flooding/  
engineering



# Geography GCSE Course

- Edexcel exam specification
- 3 Exam Papers which will be taken at the end of the 2-year course
- Fieldwork is compulsory

Please check the examination details below before entering your candidate information

Candidate surname  Other names

Centre Number  Candidate Number

**Pearson Edexcel Level 1/Level 2 GCSE (9-1)**

**Monday 22 May 2023**

Afternoon (Time: 1 hour 30 minutes) Paper reference **1GA0**

**Geography A**

**PAPER 1: The Physical Environment**

You must have:  
Resource Booklet (enclosed), Calculator

**Instructions**

- Use **black** ink or ball-point pen.
- **Fill in the boxes** at the top of this page with your name, centre number and candidate number.
- In Section A answer Question 1 and **two** questions from Q
- In Section B and Section C answer **all** questions.
- Answer the questions in the spaces provided – there may be more space than you need.
- Where asked you must **show all your working out with identified at the end of your solution.**

**Information**

- The total mark for this paper is 94.
- The marks for **each** question are shown in brackets – use this as a guide as to how much time to spend on
- The marks available for spelling, punctuation and g

**Advice**

- Read each question carefully before you start to:
- Check your answers if you have time at the end.

P72566A

P 7 2 5 6 6 A

Please check the examination details below before entering your candidate information

Candidate surname  Other names

Centre Number  Candidate Number

**Pearson Edexcel Level 1/Level 2 GCSE (9-1)**

**Friday 16 June 2023**

Afternoon (Time: 1 hour 30 minutes) Paper reference **1GA0/03**

**Geography A**

**PAPER 3: Geographical Investigations: Fieldwork and UK Challenges**

You must have:  
Resource Booklet (enclosed), calculator

Total Marks

**Instructions**

- Use **black** ink or ball-point pen.
- **Fill in the boxes** at the top of this page with your name, centre number and candidate number.
- In Section A answer **either** Question 1 **or** Question 2.
- In Section B answer **either** Question 3 **or** Question 4.
- In Section C answer **all** questions.
- Answer the questions in the spaces provided – there may be more space than you need.

**Information**

- The total mark for this paper is 64.
- The marks for **each** question are shown in brackets – use this as a guide as to how much time to spend on each question.
- The marks available for spelling, punctuation and grammar are clearly indicated.

**Advice**

- Read each question carefully before you start to answer it.
- Try to answer every question.
- Check your answers if you have time at the end.

Turn over ▶

P72568A

P 7 2 5 6 8 A 0 1 2 8

Pearson



# What are the exams like?

- 3 exams
- A mixture of short questions and extended questions
- 4 x 8 markers in Paper 1, 3 x 8 markers in Paper 2 and 2 x 8 markers and 1 x 12 marker in Paper 3
- Lots of stimulus figures/multiple choice questions to stimulate questions
- We guide pupils through the extended questions carefully in Yr10 with a real focus on technique



# What are the exams like?

The UK's physical landscape is made up of different rock types.

(a) Study Figure 1 in the Resource Booklet.

Identify rock type X.

- A Chalk
- B Granite
- C Sandstone
- D Limestone

(b) State **one** characteristic of a sedimentary rock.

(1)

With reference to Figures 6c and 6d, suggest **two** reasons for the different impacts of Hurricane Matthew on Florida (USA) and Haiti.

(4)

(d) Study Figure 2 in the Resource Booklet.

Examine how coastal retreat has affected people and the environment in the landscape shown in Figure 2.

(8)

(c) Explain the Earth's atmosphere is constantly in motion.

(a) Study Figure 5a below.

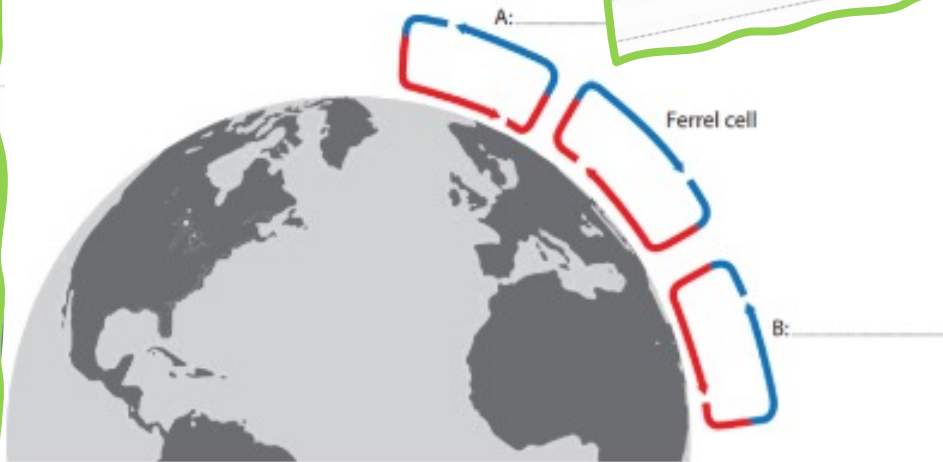


Figure 5a

The global atmospheric circulation cells in the northern hemisphere

Complete Figure 5a by labelling cells A and B.

(2)

(c) Define the term **situation of a city**.

(1)

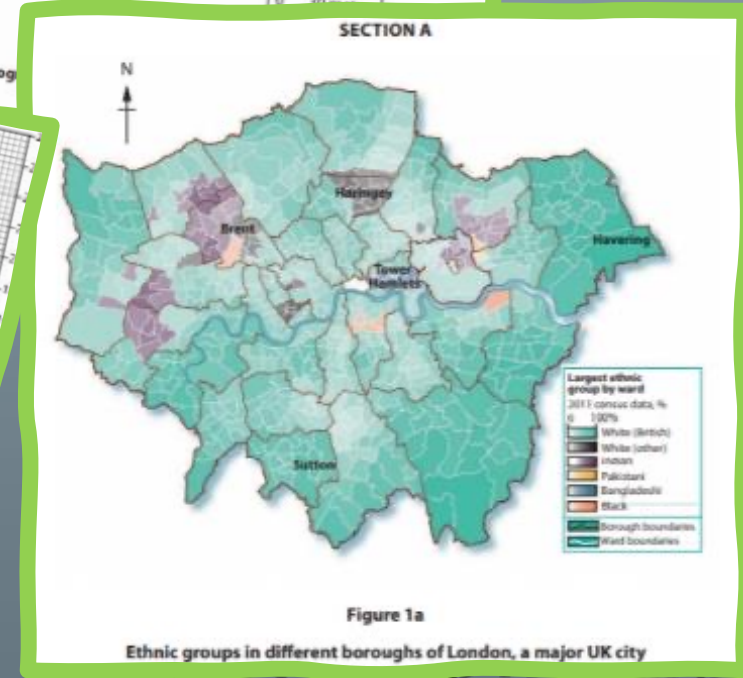
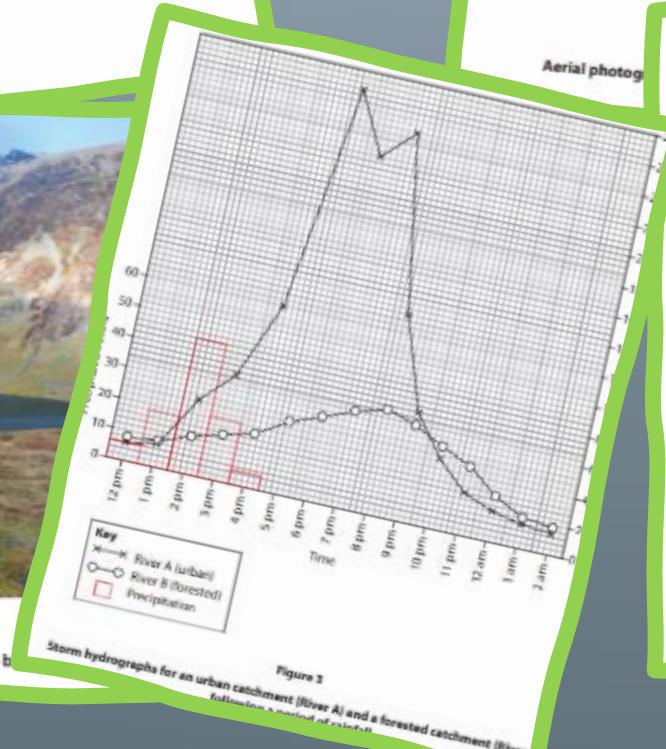
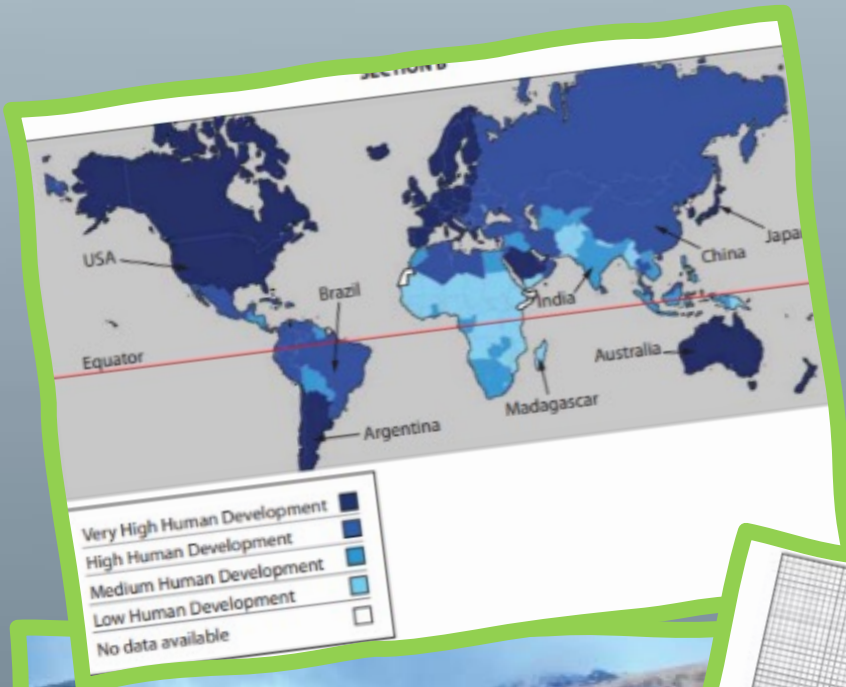
(d) State **two** reasons why people are attracted to out-of-town shopping centres.

(2)





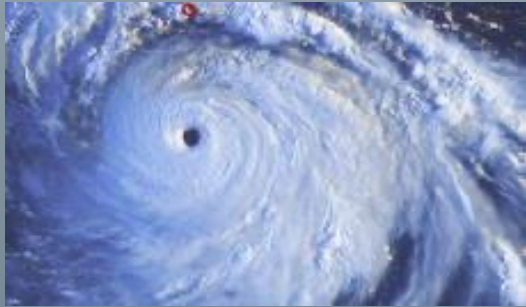
# What are the exams like?



# Paper 1: The Physical Environment (1hr30, 37.5%)



**Topic 1: The changing landscapes of the UK - glacial, coastal and river processes and landscapes: erosion, flooding and management**



**Topic 2: Weather hazards and climate change – global climate, change (evidence, cause, solutions) and tropical cyclones**



**Topic 3: Ecosystems, biodiversity and management – global ecosystems and biosphere, characteristics and sustainable management of tropical rainforests and temperate forests**





# Paper 2: The Human Environment (1hr30, 37.5%)



**Topic 4: Changing cities** – urbanisation rates globally, London: urban processes, challenge and management, Lagos – urban processes, challenge and management



**Topic 5: Global development** – indicators of development, uneven development around the world, India – a rapidly emerging country, strategies to improve development



**Topic 6: Resource management** – types of resources, distribution of (food/water) resources globally, global energy crisis and sustainable energy solutions



# Paper 3: Geographical Investigations & UK Challenges (1hr30, 25%)

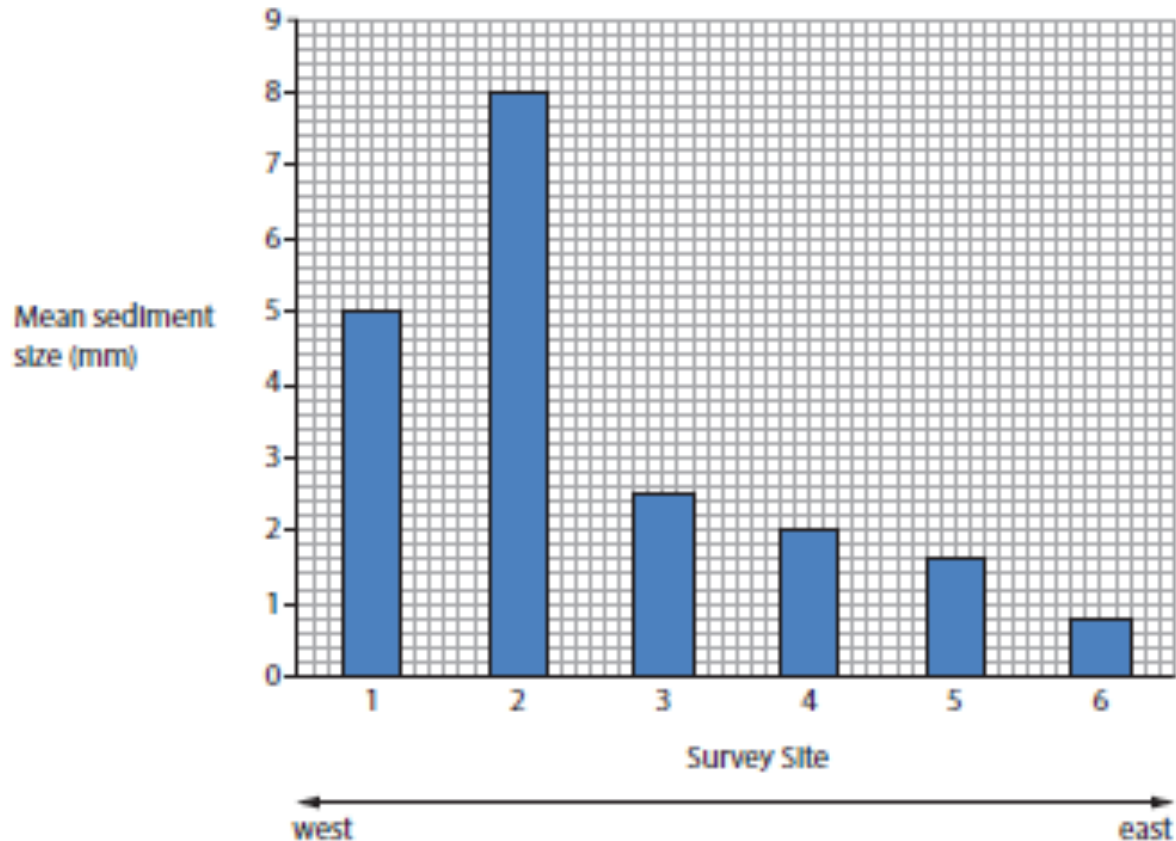


Figure 2a

Bar chart showing the mean sediment size at six survey sites from west to east, along the coastline

- Paper is asking questions about the student's fieldwork and unfamiliar fieldwork
- UK challenges section involves applying all what has been learnt to the UK





# Fieldwork



- A day of fieldwork is undertaken in the Summer Term of Yr10
- Hayling Island and Southsea
- Explore different investigations and fieldwork techniques on both coastal landscapes and urban environments
- Hands on learning



# Why choose the subject? Geographers ...

Literacy skills (assess, explain, analyse, evaluate, justify)

Evaluative skills that balance economic, social and environmental factors

Other skills: numeracy, graphical, statistical, cartographic

Are excellent investigators and problem solvers

Carry out independent research through fieldwork

Are strong team players (fieldwork) and decision makers

Have a strong balance between the arts and sciences

Benefit from fun lessons which are very varied and diverse with passionate teachers

Facilitating subject at A level and offers a huge range of opportunities





# Careers in Geography

Geography is one of 5 'facilitating subjects' at A Level

## Finance and Business:

- Banking
- Accountant
- Insurance
- Lawyer
- Management consultant
- Commercial sales
- Economic Location analyst

## Settlement

- Civil Engineering
- Quantity/ Building Surveyor
- Urban regeneration
- Local government
- Transport Planning
- Environmental engineer

## Physical systems

- Coastal defence engineer
- River flood hydrologist
- Climate/Weather forecaster
- Hazard prediction and management
- Flood protection engineer
- Pollution analyst
- Natural disaster risk assessor

## Geographical techniques:

- GIS design and analysis
- Census data
- Location analyst
- Cartographer
- Surveyor
- Military GIS specialist
- Remote sensing analyst
- CAD technician
- Aerial Surveyor

## Society

- Marketing
- Advertising
- Public Policy/Civil Service
- Global human resources Manager
- Market research analyst

## Environment and Sustainability:

- Civil servant for DEFRA
- Architect or urban planner for sustainable projects
- Environmental engineer
- Landscape architecture

## Development and Globalisation:

- Aid worker/Charity Officer
- Government diplomat
- Civil Servant for DFID
- Refugee and asylum adviser
- Economic adviser and analyst
- United Nations

# Geography GCSE @SPH

**Any Questions?**



**St Philip Howard**  
SIXTH FORM